



**Training the health workforce  
for Primary Health Care**



**Amref International University (AMIU)**

Academic Courses Guide

**Certificate Programmes**

# AMREF INTERNATIONAL UNIVERSITY

Amref International University (AMIU) is an accredited institution of higher learning focused on training in health sciences and is fully owned by Amref Health Africa.

AMIU is founded on the experience and intellect of Amref Health Africa, which is reputed with over 65 years of quality and innovative public and community health interventions, trainings and education.

AMIU has nurtured leaders and shaped the future of public health practice in Africa for over 40 years under its predecessor Amref International Training Centre (AITC). We lead the way in health sciences education with a breadth of programmes.

We focus primarily on health sciences with a commitment to progressively develop innovative programmes catering for the present and future needs of African population.



## OUR VISION

To be a leading University in healthcare through excellence in education, cutting edge research and scalable innovations that deliver lasting health change.



## OUR MISSION

To advance healthcare by educating fit for purpose leaders, driving cutting-edge research and partnering with communities to deliver equitable, inclusive, sustainable health solutions.



## OUR VALUES

- Excellence
- Innovation
- Ethical Practices
- Commitment
- Diversity, equity and inclusion
- Collaboration

## OUR MOTTO

Inspiring Lasting Change

## OUR IDENTITY



Pan-African University



Health Sciences Oriented



Equity in access to education for young people from marginalised setting



A unique data set for research opportunities for student placement and outreach



Founded by and connected to the NGO Amref Health Africa



Community-based approach



A student-centred training university

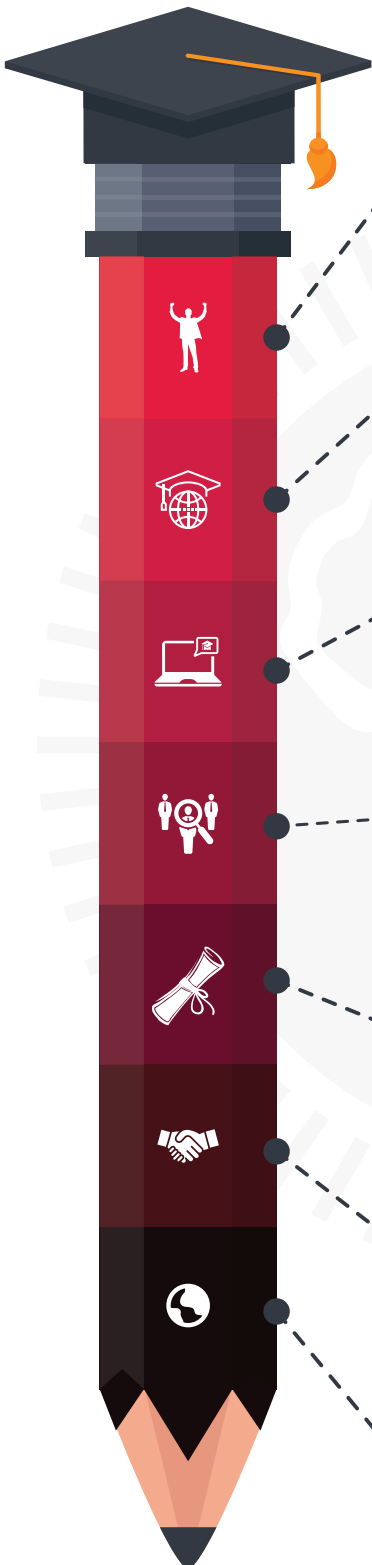


Our offering is innovation driven and evidence-based



Highly connected with local, national and regional governments and communities

# WHY AMIU



## Be a Change Maker!

Join a university dedicated to training health professionals equipped to tackle Africa's unique health challenges. With over 65 years of expertise, AMIU empowers you to make a lasting impact.

## Explore World-Class Programmes

Choose from a diverse range of cutting-edge programmes in health sciences designed to prepare you for leadership roles in a rapidly evolving healthcare landscape.

## Study without limits!

AMIU's innovative virtual, blended, and face-to-face learning modes allow you to achieve your educational goals from anywhere, fitting your studies seamlessly into your life.

## Endless Career Opportunities!

Step into rewarding careers in research, healthcare management, NGOs, and more. AMIU graduates are leaders driving transformational change in the health sector.

## Unlock Scholarship Opportunities!

Access financial aid and scholarships, to support your education and help you focus on excelling in your studies.

## Make Connections that matter

Experience a Pan-African, inclusive environment that values equity and diversity, from over 20\*\* nationalities worldwide.

## Go Global!

Be part of a globally recognized university with strong international connections. From student support to career placement, AMIU sets you up for success on the world stage.



## CERTIFICATE PROGRAMMES

### Certificate in Community Health - Level 5

This is a competency-based TVETA approved programme that is offered at Amref International Training Centre (*The Amref International University-TVET Directorate*) aimed at equipping the students with the knowledge, skills, attitudes, and competencies that will enable them to perform various roles to help manage health issues in communities.

**Course Duration:** 1 Academic Year - 4 Semesters (3 for classwork and 1 for Industrial attachment)

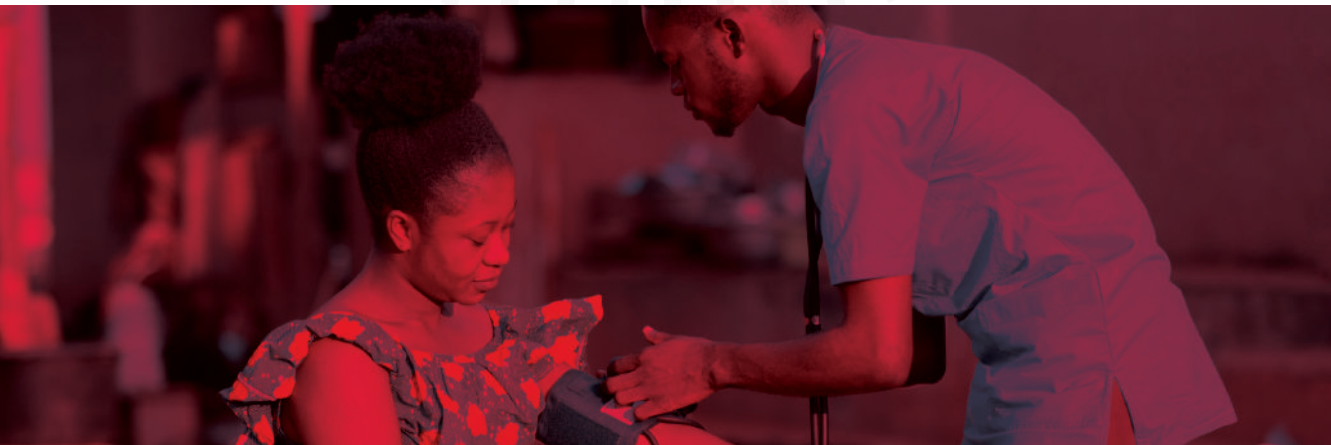
**Intakes:** January, May and September | **Mode of Delivery:** Full-time (On Campus) - (Monday-Friday; 8AM - 5PM)

#### Entry Requirements

- i. Kenya Certificate of Secondary Education (KCSE) mean grade D; OR
- ii. Equivalent qualifications as determined by Kenya National Qualifications Authority (KNQA); OR
- iii. Any other International qualifications should get approval from the Kenya National Qualifications Authority (KNQA).

#### Career Pathways

Upon completion, the student qualifies as an assistant community health specialist. In addition, the student can advance studies to pursue a diploma in Community Health, or any other programme as determined by KNQA.



## Certificate in Counselling Psychology - Level 5

This is a competency-based TVETA approved programme that is offered at Amref International Training Centre (*The Amref International University-TVET Directorate*). This course is designed to equip an individual with competencies for assessing the client, providing counselling services, crisis, trauma, marriage and family, medical conditions, guidance and counselling in learning institutions, addiction, child, adolescent, special needs and disability, and workplace counselling services, as well as manage counselling services.

**Course Duration:** 1 Academic Year - 3 Semesters (2 for classwork and 1 for Industrial attachment)

**Intakes:** January, May and September | **Mode of Delivery:** Full-time (On Campus) - (Monday-Friday; 8AM - 5PM)

### Entry Requirements

- i. Kenya Certificate of Secondary Education (KCSE) mean grade D; OR
- ii. Equivalent qualifications as determined by Kenya National Qualifications Authority (KNQA); OR
- iii. Any other International qualifications should get approval from the Kenya National Qualifications Authority (KNQA).

### Career Pathways

Upon completion, the student qualifies as a counselling psychologist assistant. In addition, the student can advance studies to pursue a Diploma in Counselling Psychology or any other programme as determined by Kenya National Qualifications Authority (KNQA).



## Certificate in Health Records and Information Technology (IT) - Level 5

This is a Competency-based TVET programme that is offered at Amref International Training Centre (*The Amref International University-TVET Directorate*). The course is designed to provide students with the skills and knowledge necessary to manage and maintain medical records, patient registration, Apply data collection, performing daily bed returns in hospitals, disease coding and indexing and to understand the principles of health information management and the complexity of the healthcare systems, to work in both private and public informatics sectors of the economy.

**Course Duration:** 2 Academic Years

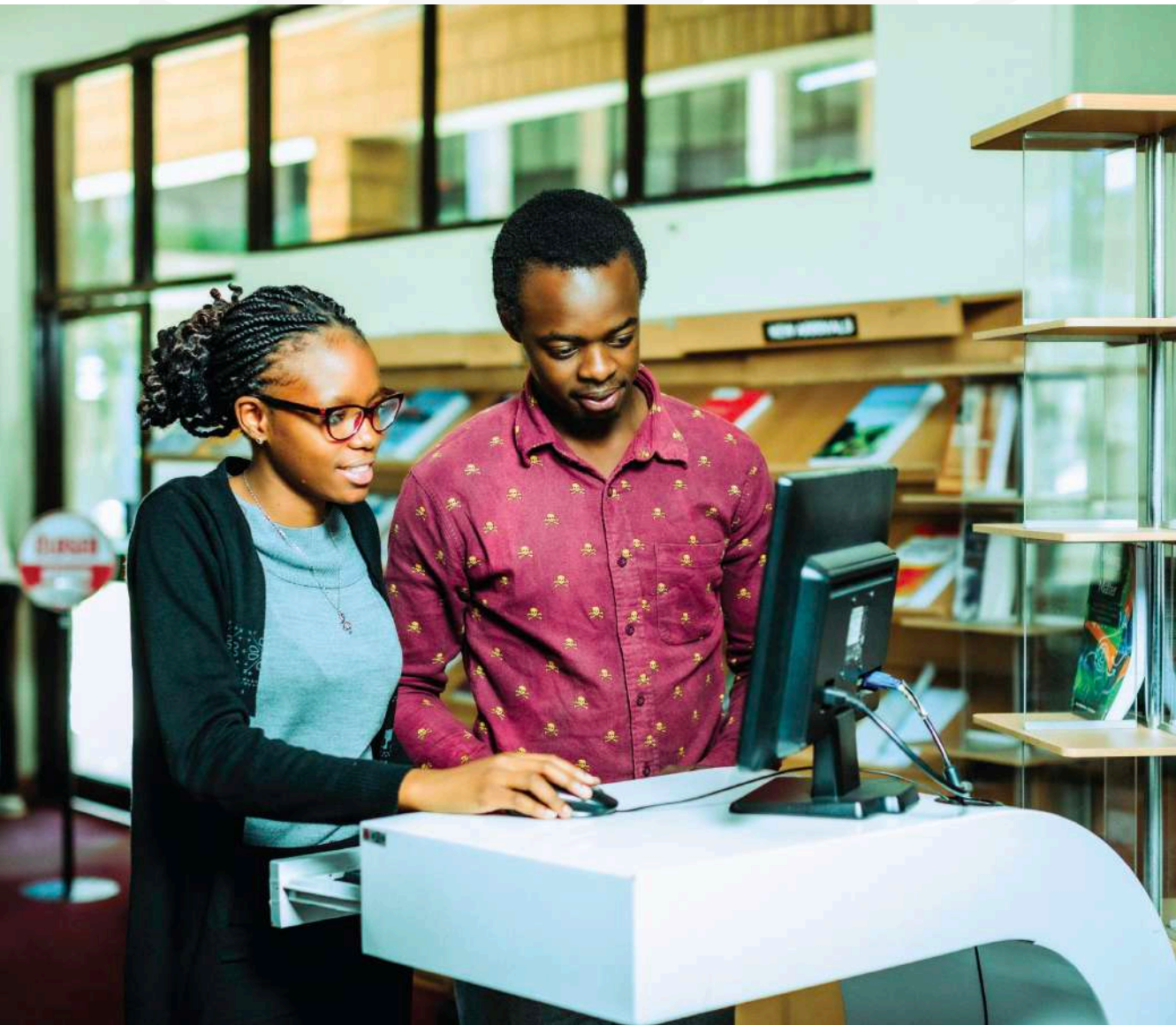
**Intakes:** January, May and September | **Mode of Delivery:** Full-time (On Campus) - (Monday-Friday; 8AM - 5PM)

### Entry Requirements

- i. Kenya Certificate of Secondary Education (KCSE) mean grade C- OR
- ii. Equivalent qualifications as determined by Kenya National Qualifications Authority (KNQA).

### Career Pathways

Upon completion, the student can pursue a Diploma in Health Records. The student also qualifies to work as a health records and information technologist, case manager in insurance companies and in general health records management.



## OUR CAMPUS LIFE

### Language Proficiency

AMIU, an English-medium university, requires all students to demonstrate English proficiency for admission.

### Financial Aid/ HELB

The University offers scholarships whenever available, Students who get admission can apply for HELB upon successful admission to the University.

### Joining Instructions

Applications are to be made on our website portal <https://admissions.amref.ac.ke/>

### Student Orientation

Orientation will be done on the first week of the semester with the school management and department head.

### Accommodation

Student accommodation facilities are available within the campus.

### Assistance for International Students

International students will be required to join the international students committee through the office of the Dean of students.

### Work Study

Work study is available through the Dean of students and the Department assistance.



**JOIN AMIU TODAY!**

SCAN ME!



 [www.amref.ac.ke](http://www.amref.ac.ke)

 [amiuadmissions@amref.ac.ke](mailto:amiuadmissions@amref.ac.ke) or [enquiry@amref.ac.ke](mailto:enquiry@amref.ac.ke)

 +254 112 352 343

 Amref International University

 @AmrefUniversity

 @amrefuniversity

 Amref International University (AMIU)

**Amref International University (AMIU)**

Thika Road, opposite Clay Works

P O Box 27691-00506, Nairobi

Tel: +254 112 352 343